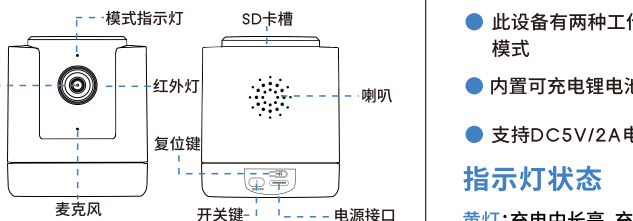




# 使用手册

## 外观介绍



**恢复出厂方法:** 摄像机开机状态, 按住复位键3秒左右, 直到听到“复位完成, 即将重启设备”的提示音或者蓝灯和红灯交替慢闪。

## 设备说明

- 此设备有两种工作模式: AP热点模式和WiFi远程模式
- 内置可充电锂电池
- 支持DC5V/2A电源充电器

## 指示灯状态

**黄灯:** 充电中长亮, 充满电熄灭。

**蓝灯:** 慢闪等待Wi-Fi连接, 快闪Wi-Fi连接中, 长亮Wi-Fi连接成功。

**恢复出厂:** 蓝灯和红灯交替慢闪。

## 低电报警: 蓝灯和红灯同时快闪。

## 第一步 安装前准备

- ☑ 单击“ON/OFF”开关键3秒开机
- ☑ 复位键长按3秒恢复出厂设置。
- ☑ 第一次连网使用建议将摄像机放置于路由器2米之内
- ☑ 手机连接路由器Wi-Fi, 并清楚Wi-Fi连接密码。(只支持2.4GHz Wi-Fi)
- ☑ 手机连接路由器Wi-Fi, 并清楚Wi-Fi连接密码。(关机操作: 长按开关键3秒关机)

## 第二步 APP下载和注册



- 1 请在手机商城搜索“Fowl”下载APP, 或者扫描二维码下载。



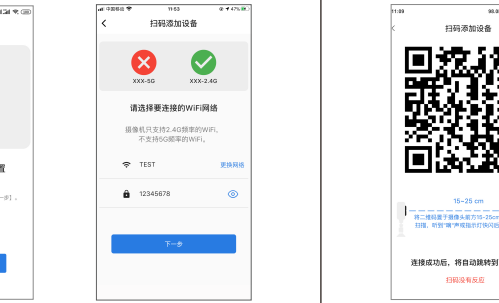
- 2 打开APP, 点击“快速注册”, 输入用户名、密码完成注册。

## 第三步 添加设备到APP

### 方法一: 扫码连接



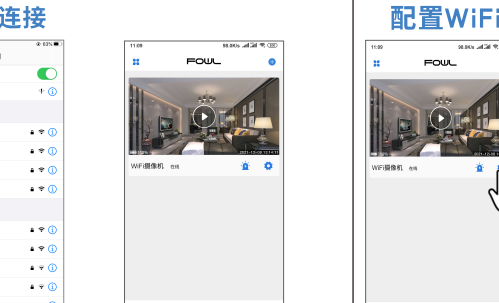
- 1 点击添加设备选择“扫码添加摄像机”。



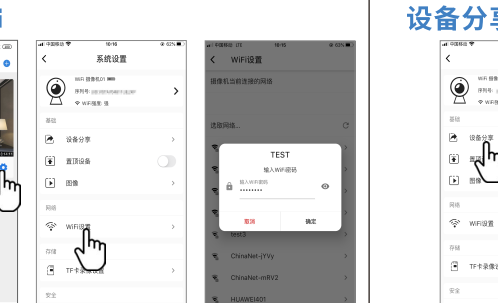
- 2 将摄像机开机。



- 3 长按复位键3秒, 将摄像机恢复出厂设置。



- 4 确认需要连接的WiFi, 并输入正确的WiFi密码。(设备目前不支持5G Hz网络)

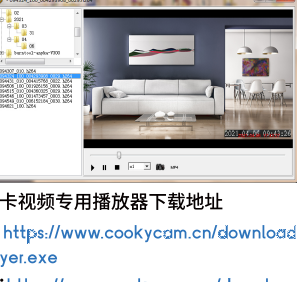


- 5 用摄像机镜头扫描APP生成的二维码, 直到摄像机发出“滴”的一声。



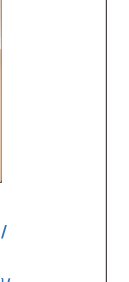
- 6 等待摄像机联网成功后点击“立即绑定”。

## 方法二: AP连接



- 1 请进入手机设置—选择OK-XXX开头的WiFi热点并连接。
- 2 打开APP, 点击播放即可观看和操作摄像机。

## 配置WiFi



- 1 进入摄像机参数设置。
- 2 选择WiFi配置。
- 3 选择您的无线网络并正确输入WiFi密码。

## 设备分享



- 进入摄像机“参数设置”, 点开“设备分享”, 选择“二维码分享”。其他用户可打开APP, 点击首页右上角“+”符号, 扫描此二维码添加设备。

## 电脑专用播放器

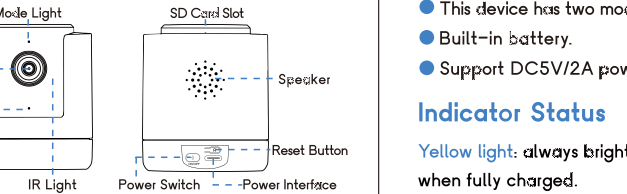


- Micro SD卡视频专用播放器下载地址
- Win版本: <https://www.cookycam.cn/download/VideoPlayer.exe>
- Mac版本: <https://www.cookycam.cn/download/VideoPlayer-Mac.dmg>
- 如有任何疑问, 请随时联系我们的客服人员, 谢谢!



# USER MANUAL

## Product Description



**How to factory reset:** When the camera is turned on, press and hold the reset button for about 3 seconds until you hear the "reset complete, will restart the device" or the blue light and red light flash alternately slowly.

## Device Description

- This device has two modes: AP mode and WiFi mode
- Built-in battery.
- Support DC5V/2A power supply.

## Indicator Status

**Yellow light:** always bright during charging, goes off when fully charged.

**Blue light:** slow flash --- waiting for Wi-Fi connection; fast flash --- during Wi-Fi connection; always bright --- Wi-Fi connection success.

**Factory reset:** the blue light and red light flash alternately slowly.

## Low battery alarm:

the blue light and red light flash rapidly at the same time.

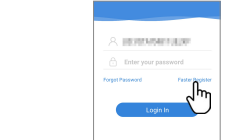
## Step 1: Pre-Setup

- ☑ Click the "ON/OFF" button 3 seconds to turn on.
- ☑ Long press the reset button 3 seconds to factory reset.
- ☑ It's recommended to place the camera within 2 meters of the router for the first time connecting to the Internet.
- ☑ Connect the mobile phone to the router Wi-Fi, and know the Wi-Fi connection password. (Only 2.4GHz Wi-Fi is supported)

## Step 2: APP Download and Registration



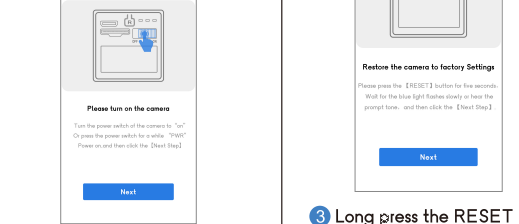
1 Search for "Fowl" in App Store or Google Play, or scan the QR code to download the app.



2 Click "Register", enter the user name and password to complete the registration.

## Step 3: Add Devices to the APP

### Method One: Scan QR code to add camera



1 Click Add Device and choose "Scan QR Code to add camera".

2 Turn on the camera.

### Method Two: Restore to factory settings



3 Long press the RESET button for 3 seconds to restore the camera to factory settings.

4 Confirm the WiFi to be connected and enter the correct password. (The device does not support 5G Hz networks)

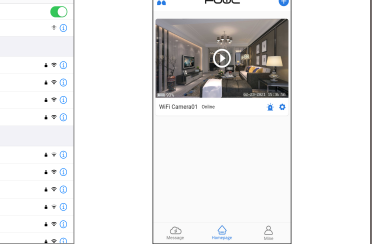


5 Scan the QR code generated by the App with the camera lens until the camera makes a beep.



6 After the camera is successfully connected to the Internet, click "Bind now".

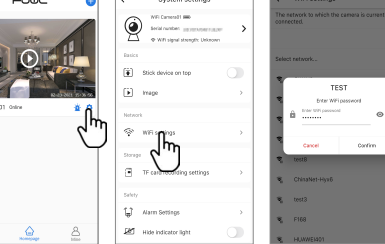
## Method Two: AP Connection



1 Please go to your mobile phone WiFi Settings, select the WiFi hotspot that start with OK-XXX and connect it.

2 Open the app and Click play to watch and operate the camera.

## Configure WiFi

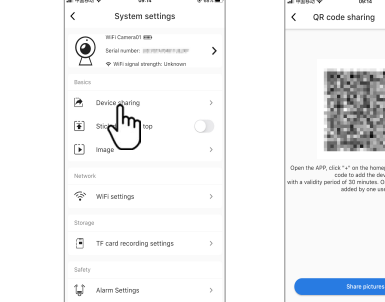


1 Enter camera parameters

2 Select WiFi settings.

3 Select your home WiFi and enter the WiFi password correctly.

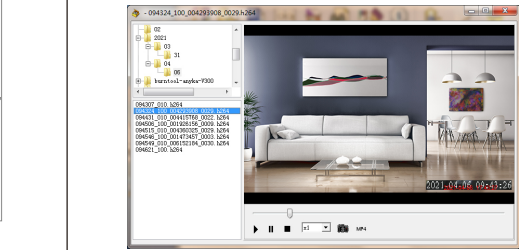
## Device Share



Click "Settings" on the right corner, then select "Device Share" --- "QR Code Sharing". Other users can open the app and click the "+" in the upper right corner of the home page to scan the QR code to add the device.

Click "Settings" on the right corner, then select "Device Share" --- "QR Code Sharing". Other users can open the app and click the "+" in the upper right corner of the home page to scan the QR code to add the device.

## Dedicated PC Video Player



Download dedicated video player for playing Micro SD card video:

- For Win: <https://www.cookycam.cn/download/VideoPlayer.exe>
- For Mac: <https://www.cookycam.cn/download/VideoPlayer-Mac.dmg>

If any questions, please feel free to contact our customer service. Thank you!