

## Wifi Water Leakage Detector User Manual



\* Please read this manual carefully before use and keep it for future reference.

01

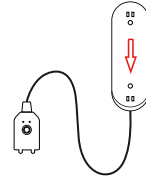
## Specifications:

Input voltage: DC3V LR03  
 Static current:  $\leq 10\mu\text{A}$   
 Alarm current:  $\leq 160\text{mA}$   
 Low-Voltage indication:  $\leq 2.6\text{V}$   
 WIFI: 802.11 b/g/n  
 Installation: Wall-mounted  
 Detection: Water-sensor detector  
 Working Temperature:  $-10\text{ }^{\circ}\text{C} - +50\text{ }^{\circ}\text{C}$   
 Working Humidity: 95%RH

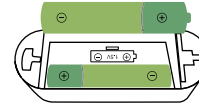
02

## How to use:

1. Push the mounting bracket downward and take out the bracket, then insert the battery.



2. Put the battery into the battery bin and place it according to the graphics in the battery bin. After two batteries are loaded, the indicator lights are always on and then off.



03

3. Download TUYA Smart APP in app store or google play store, or scan the following QR code.

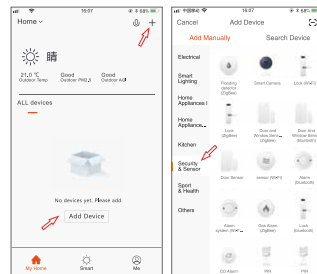


iOS / Android

04

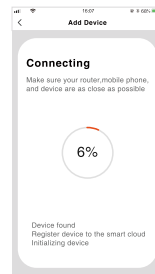
4. Register with mobile phone number, click "My Home" interface "+" or click "Add Devices" in the middle blank.

Select the security sensor and click on the Alarm system.



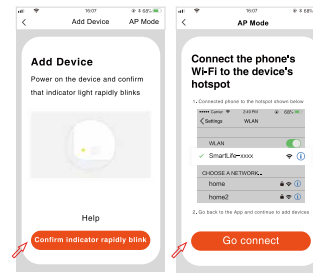
05

5. With the card pick-up pin in the accessory package, hold the reset key for more than 5 seconds, and the indicator flashes into the automatic network connection mode. Enter the WiFi password according to the prompt, and click to confirm.



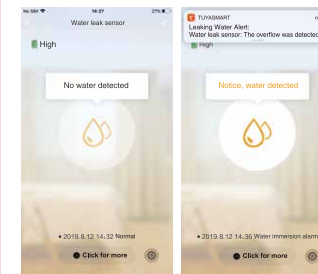
06

6. In the automatic network connection mode, the indicator flashes quickly, holds the reset key for 5 seconds with the card pick-up pin, the indicator flashes slowly, and enters the manual network connection mode. APP chooses compatible mode. According to the prompt, enter "WiFi password" and click confirmation, then switch to the WiFi settings interface. Connect Smartlife\_XXXX network and return to APP to continue adding devices.



07

7. Network pairing successfully, click Water-Drop button and enter the interface. Put the probe into water, Water leakage logo will show: Water is detected; Take it out, Water leakage logo will show: No water is detected.



08