

WIFI SMART SIREN USER MANUAL



Android / iOS



Please read this manual carefully before use.

Features

- Based on the TUYA smart home platform, work with most of the TUYA smart based smart products.
- On-site high-decibel alarm, flashing lights and other alarm modes.
- Home Arm, Away Arm, Disarm
- Low-battery detection
- System power off detection.
- Tamper detection.
- Built-in battery.

Download the app and register

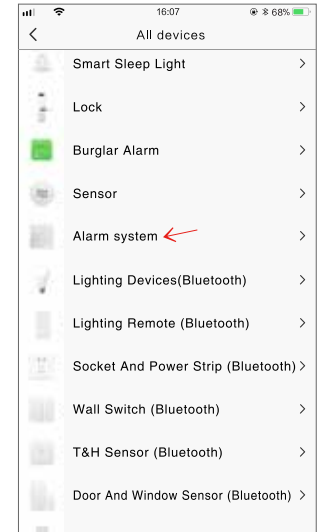
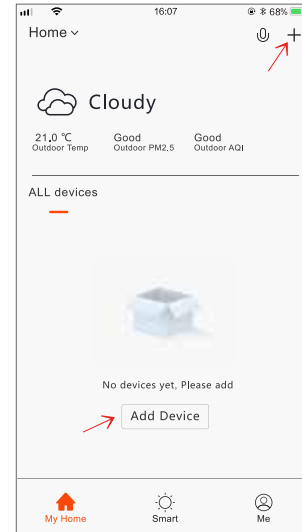
Search for “TuyaSmart ” or scan the QR code below to download the app and register.



How to connect WiFi network.#1:

“Default mode”

① Open the APP homepage, press “+” in the upper right corner to add devices → select “ALL devices” → select “Alarm system”

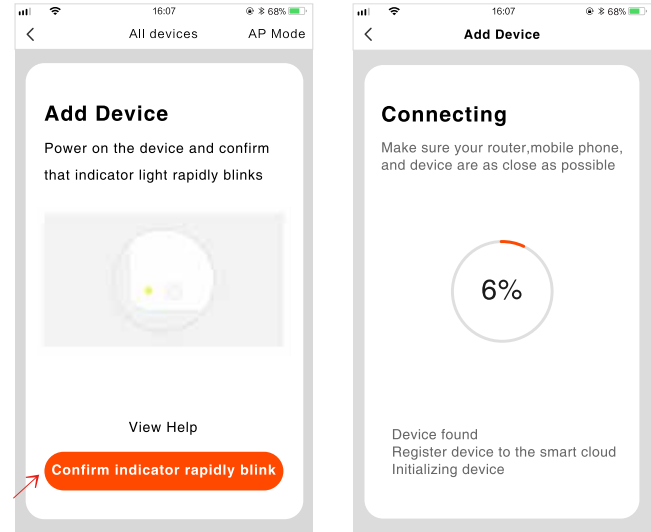


② Re-open the smart siren switch, re-connect the power, press and hold the RESET button for 5 seconds, the indicator flashes quickly, ready to connect WiFi.



5

③ “Comfirm indicator quickly blink” → Enter WiFi password (2.4G WiFi only) → OK

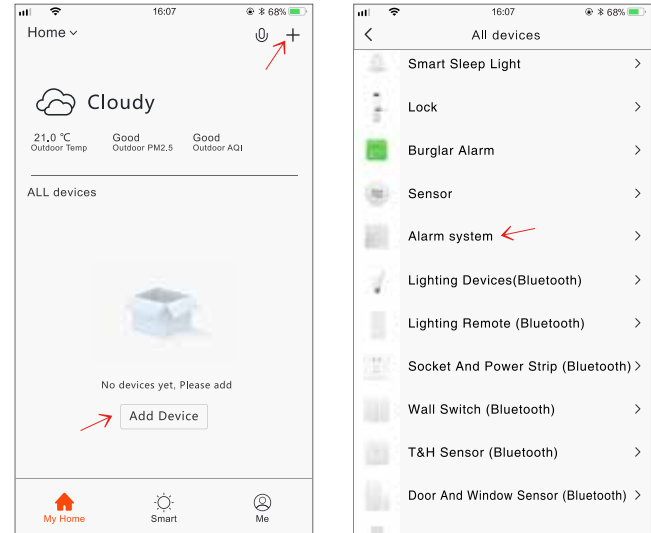


6

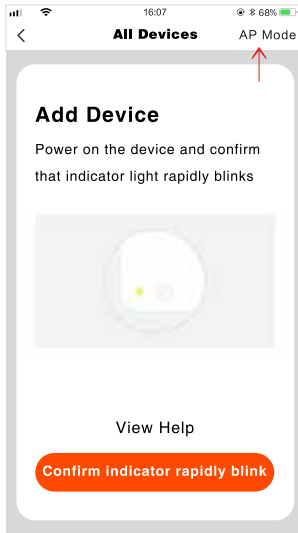
How to connect WIFI network, #2: “compatibility mode”

If the default way to connect WIFI is unsuccessful, you can select “AP Mode”.

① Open the APP homepage, press “+” in the upper right corner to add devices → select “ALL devices” → select “Alarm system”



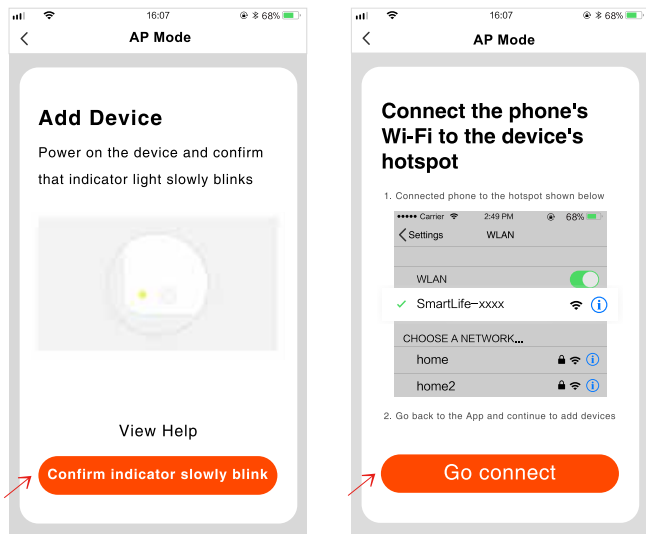
- ② Click on “ AP Mode ” at the top right of the app.



- ③ Re-open the smart siren switch, re-connect the power, press and hold the RESET button for 5 seconds, the indicator light flashes quickly, continue to press and hold the RESET button for 5 seconds, the indicator light flashes slowly, ready to connect.

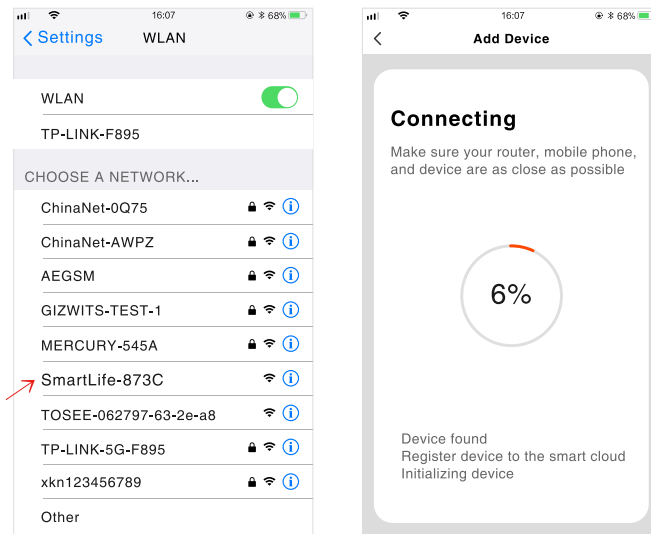


- ④ “ Confirm indicator slowly blink ” → Enter the network password (2.4G WiFi only) → OK → Go connect.



11

- ⑤ Find “ SmartLife-xxx ” in the wifi list of your mobile and click Connect → Return to “ TuyaSmart ” APP.



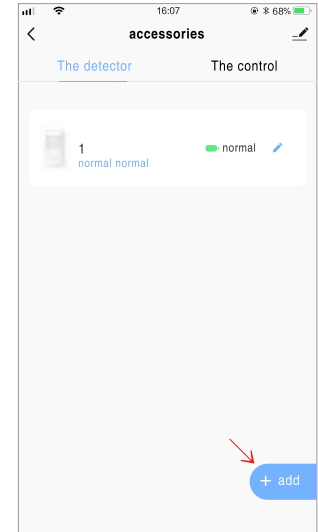
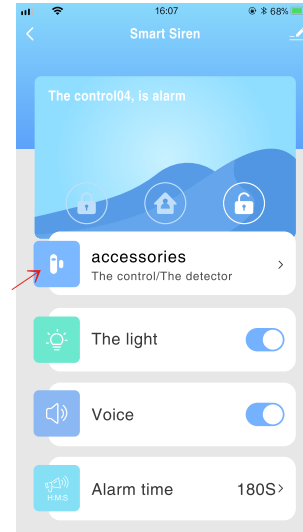
12

WiFi connection notes:

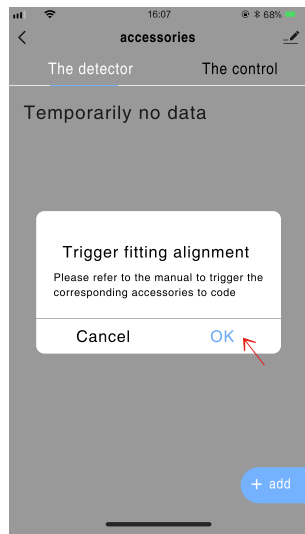
1. Does not support 5G router..
2. If the above two way connection both fail, please try to restart the router.
3. Siren host and mobile phone as close as possible to the router.

Add detectors and remotes:

- ① Click on the APP homepage “ accessories ” → select “ The detector ” or “ The control ” → click on “ add ”



- ② Click “ OK ” → smart siren light keep on → accessories send signals
→ smart siren light flash 3 times, adding is successful.



15



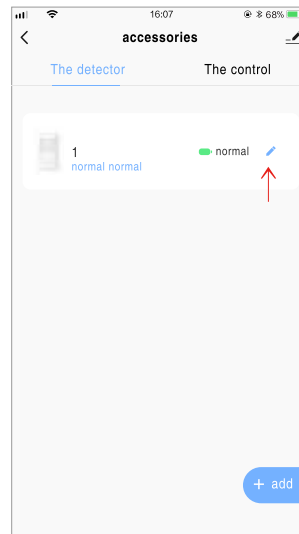
door magnetic: Move the 2 sides
>2CM, indicator light flash and
send a signal.

PIR detector: Turn on the
switch, indicator light flash and
send a signal.

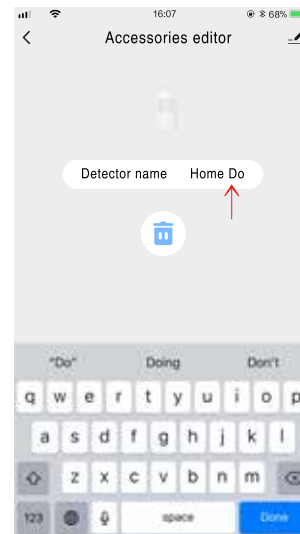


Edit the accessory name:

In order to make it easier to distinguish different alarm events, you can edit the accessories' name (within 24 characters).



16



Specifications:

Arm: alarm with soud and light flash

Home Arm: only light flash to alarm

Disarm: only SOS alarm available

Remote controls: max 8

Detectors: max 24

Volume: high / medium / low

Beep time: 1-180 seconds adjustable

Timing control: arm / home arm / disarm

Accessories frequency: 433Mhz (can be customized to any frequency between 300-912M)